

tiles  
colors  
passion

**ARROW**

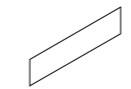
 TONALITE



1  
Pomice ARW2372  
23x5 . 9"x2"  
2  
Cemento ARW2373  
23x5 . 9"x2"

# ARROW

FORMATI  
SIZES



23x5 . 9"x2"

COLORI  
COLOURS

ARDESIA

GESSO

PIOMBO

POLVERE

TABACCO

SAND

PERGAMENA

LAVAGNA

TALCO

CEMENTO

POMICE

TUFO

LINO

SETA



SPESSORE  
THICKNESS

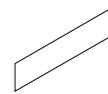


TECNOLOGIA  
TECHNOLOGY

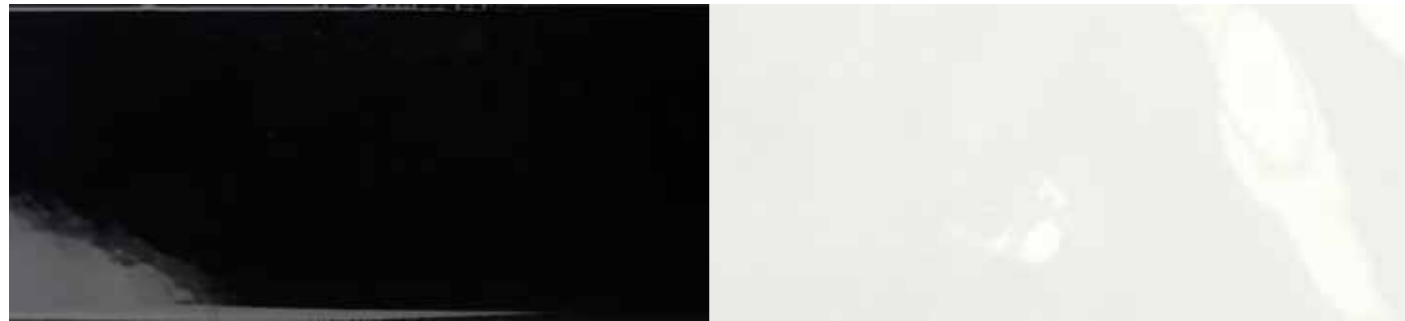
Gres smaltato Cat. BIII  
Glazed ceramic Cat. BIII

RESISTENZA ALLA SCIVOLOSITÀ  
SLIP RESISTANCE

R9



- 1** Gesso ARW2330  
23x5 . 9"x2"
- 2** Sand ARW2337  
23x5 . 9"x2"
- 1** Tabacco ARW2338  
23x5 . 9"x2"
- 2** Ardesia ARW2339  
23x5 . 9"x2"



ARDESIA

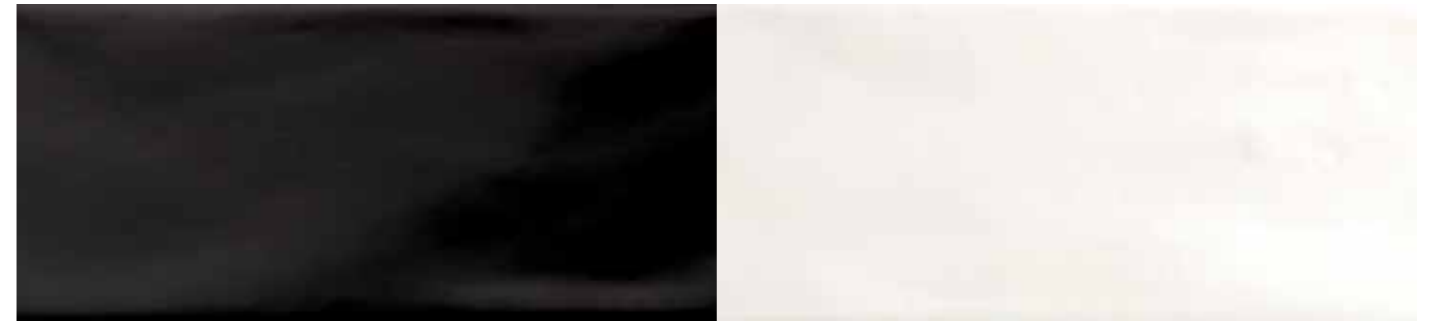
GESSO



23x5 . 9"x2"

ARW2339

ARW2330



LAVAGNA

TALCO



23x5 . 9"x2"

ARW2379

ARW2370



PIOMBO

POLVERE



23x5 . 9"x2"

ARW2331

ARW2332



CEMENTO

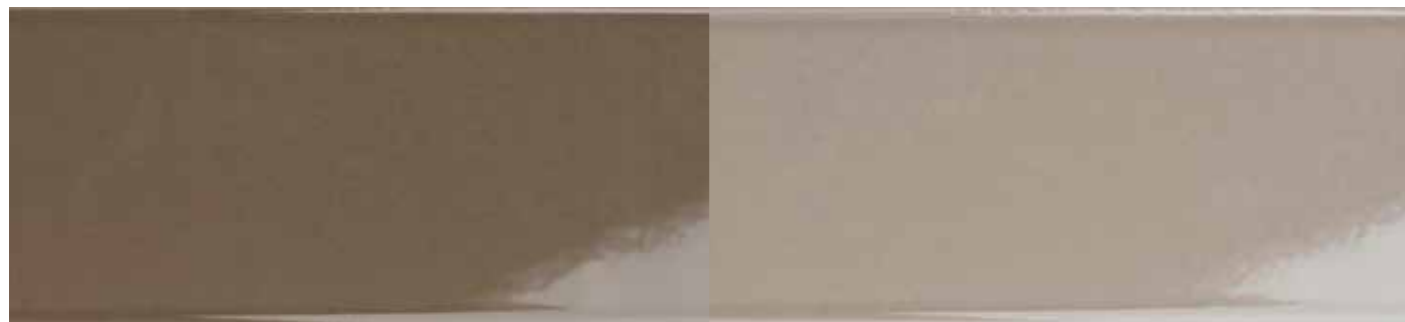
POMICE



23x5 . 9"x2"

ARW2373

ARW2372



TABACCO

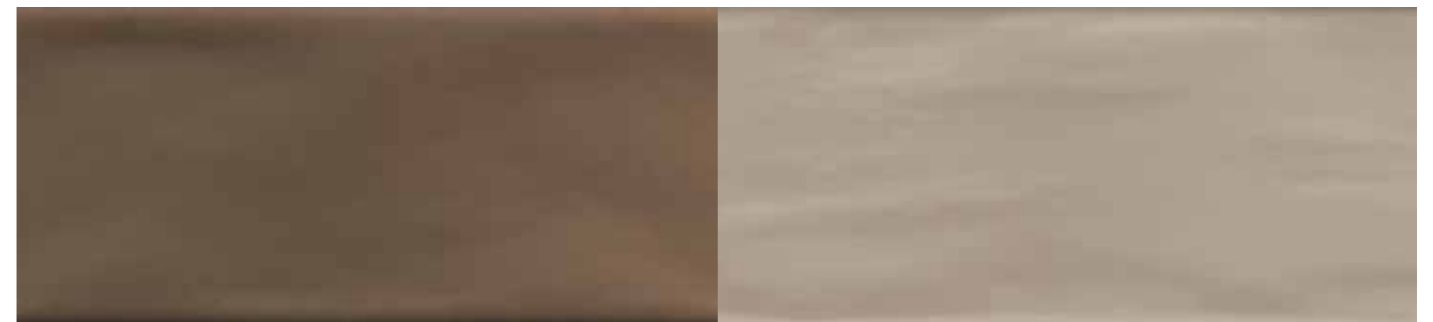
SAND



23x5 . 9"x2"

ARW2338

ARW2337



TUFO

LINO



23x5 . 9"x2"

ARW2378

ARW2377



PERGAMENA

SETA

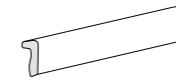


23x5 . 9"x2"

ARW2331

ARW2371

PEZZI SPECIALI  
SPECIAL TRIMS



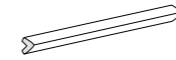
**Terminale**  
4x30 . 1.6"x12"



**Ang. Esterno Terminale**  
2x4 . 0.8"x1.6"



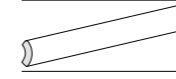
**Ang. Specchio Terminale**  
4x4 . 1.6"x1.6"



**Matita**  
2x30 . 0.8"x12"



**Sguscio Matita**  
2x2 . 0.8"x0.8"



**Quarter Round**  
3x30 . 1.2"x12"



**Ang. Quarter Round**  
3x3 . 1.2"x1.2"



**Profilo Jolly**  
1,3x30 . 0.4"x12"

Pezzi speciali a richiesta su tutti i colori della gamma.

Special Trims on request on all the colours of the range.

IMBALLI  
PACKAGING

Formato Size	Spessore/mm Thickness/mm	Pezzi/Scatola Pieces/Box	m <sup>2</sup> /Scatola Sq.Mt/Box	Scatole/Pallet Box/Pallet	m <sup>2</sup> /Pallet Sq.Mt/Pallet	kg/m <sup>2</sup> Kg/Sq.Mt
23x5 . 9"x2"	8	25	0,29	210	60,90	14,00

AVVERTENZE  
WARNINGS

La serie Arrow è composta da due moduli che non possono essere venduti separatamente. I due moduli sono imballati separatamente.

The Arrow series includes two units which cannot be sold separately. The two units are packaged separately.



via A. Costa 4/8  
40019 Sant'Agata Bolognese (BO) ITALY  
telefono +39 051 957 253  
fax +39 051 957 650  
info@tonalite.it  
[www.tonalite.it](http://www.tonalite.it)